



General Info
History - Geography
Challenges
Impact Study

LHC Design
Beam Performances
Machine Parameters
& Layouts

Technical
Coordination
HW Base Line
Quality Assurance
Planning

Organization
Project Structure
Divisions
Committees & WG

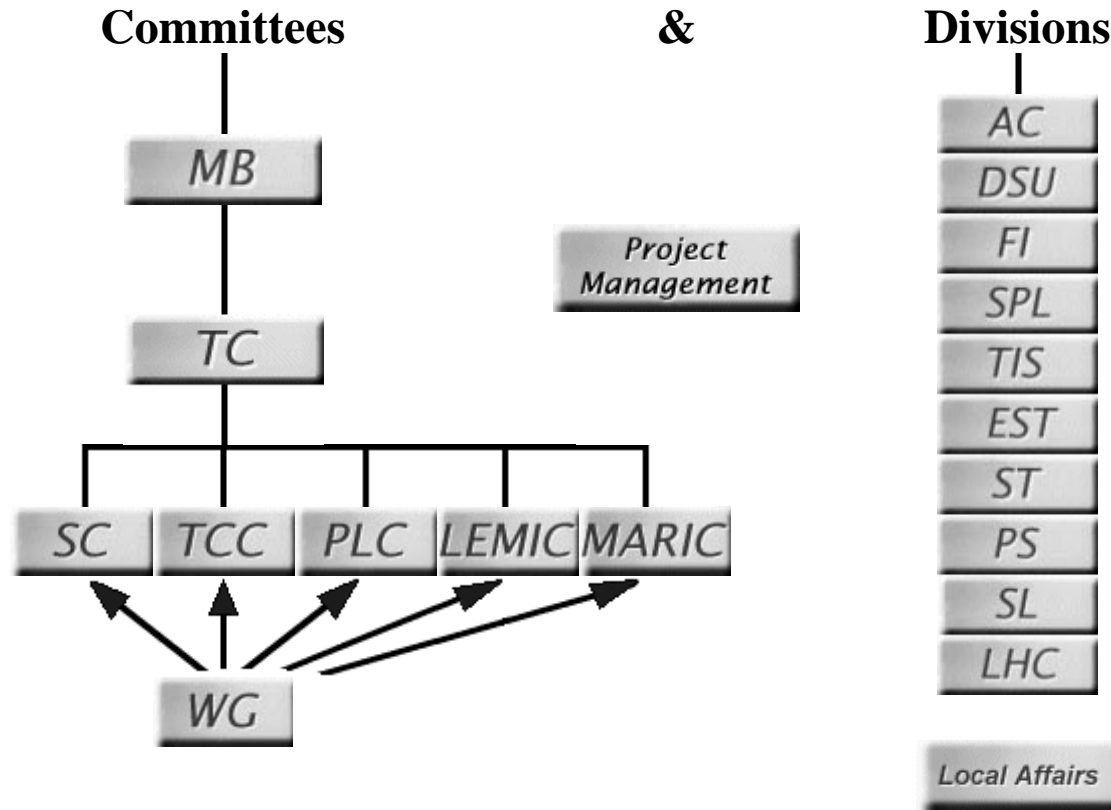
News
Seminars
Publications



LHC project Webmaster



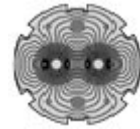
LHC Project Organization



<p align="center">External Collaborations</p> <p>US Russia Japan India Canada Host States</p>	<p align="center">LHC Experiments</p> <p>ALICE ATLAS CMS LHC-B TOTEM</p>
--	---



Working Groups



Working Groups			Committees			
			TCC	PLC	MARIC	LEMIC
		R = Report to, I = Inform				
		Chairman				
AIWG	Access & Interlock WG	G. Rau	R			
ATOLL	Aperture & Tolerance in LHC WG	J. B. Jeanneret		R	I	
DBWG	Database WG	P. Lienard		R		
DEWG	Dynamic Effect WG	P. Proudlock		R	I	
EEWG	Electrical Engineering WG	P. Proudlock	R	I	I	
FCMPWG	Field Component & Machine Performance WG	L. Walckiers		R	I	
HLWG	Heat Load WG	L. Taviani		R	I	
IDWG	Beam Instrumentation & Diagnostic WG	C. Bovet	I	R	I	
ImpWG	Impedance in LHC WG	F. Ruggiero	I	R	I	
InjWG	Injection WG	V. Mertens	I	R	I	
IRWG	Insertion Region WG	R. Ostojic	I	R	I	I
IWG	Instrumentation WG	R. Schmidt	I	I	R	
LDIWG	LHC System Data Interchange WG	C.H. Sicard	I	I		I
QAP	Quality Assurance WG	M. Mottier	R		I	
RAD-COMWG	Radiation Component WG	R. Rausch	R		I	
SSSWG	Short Straight Section WG	P. Rohmig	I	I	R	
TAWG	Test Area WG	P. Faugeras	R		R	
TWG	Transport WG	R. Bellone	R		I	
WGA	Alignment WG	W. Scandale		R	I	
WGD	Cryo-Dipole WG		I	I	R	
	Installation Preparation WG	P. Bonnal	R		I	
	Level3 Alarm WG	H. Schonbacher	R			
	WG on Strategy & Coordination for Test Areas		I		R	

LHC project Webmaster

Last update: 14-JAN-99

LHC Dynamic Effects Working Group

Scheduled Meetings 1998,1999

Mandate:

To consider the consequences of dynamic effects arising from superconducting magnets and the dynamic response of the control/power converter/magnet system on LHC performance. To specify the requirements on dynamic effects and on correcting systems so as to ensure satisfactory operation of LHC . In particular to;

- Group together work that has already been carried out or is under study. (eg. the permissible errors from an accelerator physics point of view, the magnet errors, such as DC and AC magnetisation , etc.).
- Initiate further studies as necessary. Identify and define clearly the problems with respect to dynamic effects and take contact with others as necessary.
- Establish how and where to obtain adequate correction signals (eg. beam, reference magnets, current etc.) and how to apply correction
- Specify a realistic dynamic and static performance of the power converters and the control and feedback systems.
- Suggest likely operating scenarios for the machine (cycling, ramping profiles, collimator settings)
- Establish close collaboration with colleagues outside CERN (DESY, ex SSC etc.)
- Define the necessary hardware and a test programme (possibly in SM18) to verify the correctness of the proposal and that the required tracking, precision and correction of magnetic fields can be achieved.

If you want to be invited to the **DEWG**, or if you want to receive copies of the minutes and announcements of the **DEWG** you can subscribe/un-subscribe to the DEWG mailing lists.

The **Members** mailing list includes only the **DEWG** members. The **distribution** mailing list includes all **DEWG** members plus additional subscribers.

To be added/removed to/from the **member** mailing list see ([Members-Mailing-List](#));

To be added/removed to/from the **distribution** list see ([Distribution-Mailing-List](#))

If you want to send a mail to the DEWG [Member-Mailing-List](#) or the full DEWG [Distribution-Mailing-List](#) you can follow the following links:

[Send mail to DEWG Members only](#)

[Send mail to DEWG distribution](#)

Comments and/or suggestions can be given to [Oliver Brüning](#) and [Paul Proudlock](#)

MOWGLI lhc-proj-dewg-members@listbox.cern.ch

[Send mail to lhc-proj-dewg-members@listbox.cern.ch](mailto:lhc-proj-dewg-members@listbox.cern.ch)

[Select another list](#)

Listowner **password**
required to get full
functionality

List

information

[information file](#)

[introductory message](#)

[raw membership](#)

[sorted membership with expanded sub-lists](#)

Enter printer name

[administrator](#)

info command

intro command

who command

Print sorted
membership in
specified printer

Registration

[edit membership](#)

**subscribe &
unsubscribe**
commands

List

archive

[index of archive files](#)

Enter file name

index command

get command:
retrieve specified
archive file

User

look-up

Enter name or address
(*Be patient, this command scans through all lists*)

which command:
search for the
specified user in
every list

| [Help](#) || [Changes](#) || [Request a new list](#) || [Feedback](#) |

Tim WG

- ◆ **Considered an important high level working group**
 - Very important for the successful operation of LHC
 - Uniform/integrated approach
- ◆ **First Stage**
 - September 99, recommendations to PLC
 - Followed by a functional specification
- ◆ **Milestones**
 - String 2 - Dec 2000 onwards
 - Sector tests - end 2003
 - Machine Commissioning July 2005

Gary Beetham SL/CO (chair)
Etienne Carlier SL/BT
John Pett SL/PO
Jean-Jacques Savioz SL/BI
Philippe Baudrenghein SL/RF
Michel Jonker SL/CO (will also represent SL/OP)
Adriaan Rijllart IWG Working Group

Linkmen:

Julien Lewis PS
Michel Jonker SPS

LHC Equipment Groups

Cryogenics

Quench (magnet) protection

Vacuum

.....

**Minimum of hardwired interlocks
(Precise post-mortems needed)**